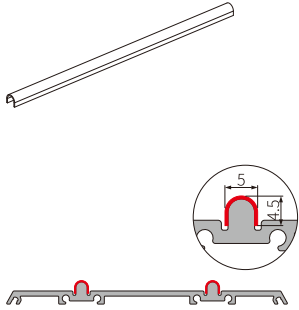


# System analysis

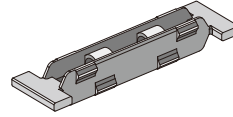
## —Track auxiliary accessories



**Technical overview**  
— Materials: stainless steel  
— Surface treatment: Original color

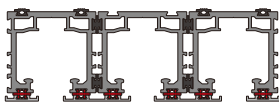
**Usage Instruction**  
— Used for bottom track with two rails in application with bottom track

| Product name                      | Model Number | order coding |
|-----------------------------------|--------------|--------------|
| Bottom Track(stainless materials) | OPK-A413     | 653859       |

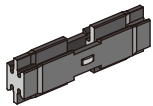


**Technical overview**  
—Material: plastic  
—Surface Treatment: Black

**Usage Instruction**  
— used with the decorative strip of Hanging sliding track system and Ground rail sliding track system  
— Install a plastic buckle every 300mm

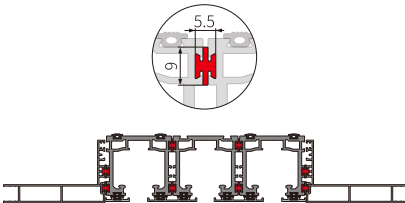


| Product name   | Inner Packing Specification | Outer Packing Specification | Model Number | order coding |
|----------------|-----------------------------|-----------------------------|--------------|--------------|
| Plastic buckle | 1000piece/bag               | 25bag/case                  | OPK-A502     | 653642       |

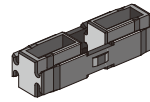


**Technical overview**  
—Material: plastic  
—Surface Treatment: gray

**Usage Instruction**  
— apply to the connection between the Hanging and Ground rail sliding track system  
— cooperate with the top track connection strip on the buckle plate for connection  
— Install an Adapting piece every 300mm

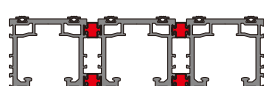


| Product name            | Inner Packing Specification | Outer Packing Specification | Model Number | order coding |
|-------------------------|-----------------------------|-----------------------------|--------------|--------------|
| 40 track Adapting piece | 1000piece/bag               | 20bag/case                  | OPK-A501     | 653790       |



**Technical overview**  
—Material: plastic  
—Surface Treatment: gray

**Usage Instruction**  
— apply to the connection between the Hanging and Ground rail sliding track system  
— cooperate with the top track connection strip on the buckle plate for connection  
— Install an Adapting piece every 300mm

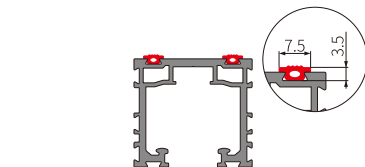


| Product name            | Inner Packing Specification | Outer Packing Specification | Model Number | order coding |
|-------------------------|-----------------------------|-----------------------------|--------------|--------------|
| 45 track Adapting piece | 500piece/bag                | 15bag/case                  | OPK-A514     | 653772       |

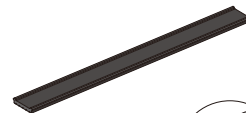


**Technical overview**  
—Material: rubber  
—Surface Treatment: Black

**Usage Instruction**  
— apply to the Top- track shock-proof of the Hanging sliding track system and Ground rail sliding track system

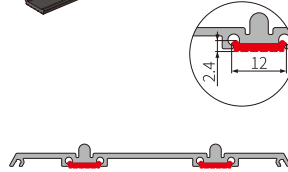


| Product name  | Inner Packing Specification | Outer Packing Specification | Model Number | order coding |
|---|-----------------------------|-----------------------------|--------------|--------------|
| Top track shock-absorption rubber strip(High quality) | 600m/roll                   | 2roll/case                  | OPK-A404     | 653906       |
| Top track shock-absorption rubber strip(standard)     | 600m/roll                   | 2roll/case                  | OPK-A404     | 654183       |



**Technical overview**  
—Material: rubber  
—Surface Treatment: Black

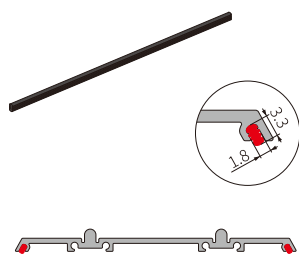
**Usage Instruction**  
— Apply to synchronized decorative wall cover A Shock-proof and Dust-proof



| Product name  | Inner Packing Specification | Outer Packing Specification | Model Number | order coding |
|---|-----------------------------|-----------------------------|--------------|--------------|
| Bottom track shock- absorption rubber strip A(High quality) | 400m/roll                   | 2roll/case                  | OPK-A414     | 653891       |
| Bottom track shock- absorption rubber strip A(standard)     | 400m/roll                   | 2roll/case                  | OPK-A414     | 654182       |

# System analysis

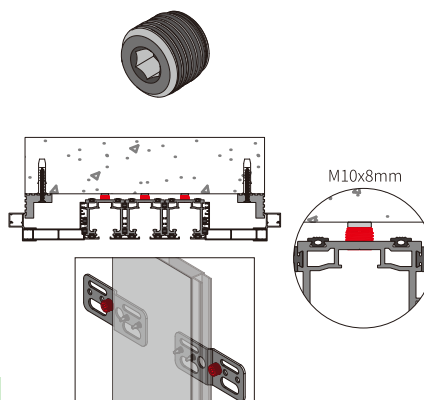
## — Track auxiliary accessories



**Technical overview**  
—Material: rubber  
—Surface Treatment: Black

**Usage Instruction**  
— Apply to synchronized decorative wall cover B  
Shock-proof and Dust-proof

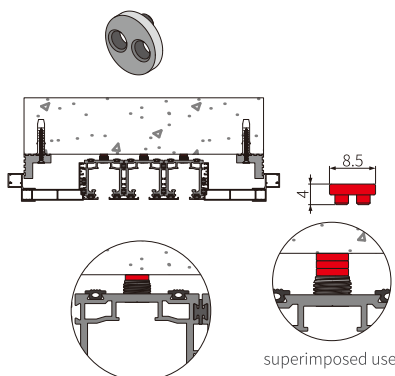
| Product name  | Inner Packing Specification | Outer Packing Specification | Model Number | order coding |
|---|-----------------------------|-----------------------------|--------------|--------------|
| Bottom track shock- absorption rubber strip B(High quality) | 2000m/roll                  | 2roll/case                  | OPK-A402     | 653905       |
| Bottom track shock- absorption rubber strip B(standard)     | 2000m/roll                  | 2roll/case                  | OPK-A402     | 654184       |



**Technical overview**  
—Material: Carbon steel  
—Surface Treatment: Black

**Usage Instruction**  
— apply to the Horizontal regulation of the Trackinstallation  
— apply to Vertical regulation of the Door cover buckle plate Installation

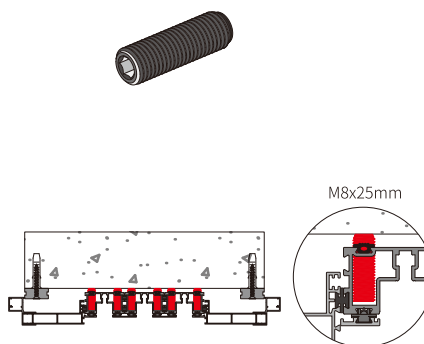
| Product name                  | Inner Packing Specification | Outer Packing Specification | Model Number | order coding |
|-------------------------------|-----------------------------|-----------------------------|--------------|--------------|
| 8mm track adjustment top wire | 500piece/bag                | 8bag/case                   | OPK-A520     | 141919       |



**Technical overview**  
—Material: plastic  
—Surface Treatment: Black

**Usage Instruction**  
— Use with the alignment  
-Top wire of the track  
— It can be used superimposed according to the size of the gap

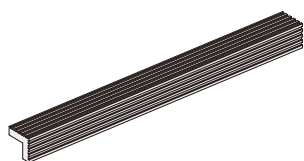
| Product name                         | Inner Packing Specification | Outer Packing Specification | Model Number | order coding |
|--------------------------------------|-----------------------------|-----------------------------|--------------|--------------|
| Track adjusting top screw rubber pad | 1000piece/bag               | 50bag/case                  | OPK-A521     | 654140       |



**Technical overview**  
—Material: carbon steel  
—Surface Treatment: Black

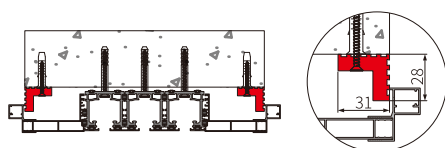
**Usage Instruction**  
— Used for adjusting the track level (application with bottom track)

| Product name                             | Model Number | order coding |
|--|--------------|--------------|
| M8*25mm specified track adjustment screw | OPK-A532     | 142159       |

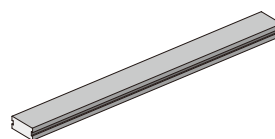


**Technical overview**  
— Material: bamboo and wood fiber  
— Surface treatment: black

**Usage Instruction**  
— Used for concealing gap

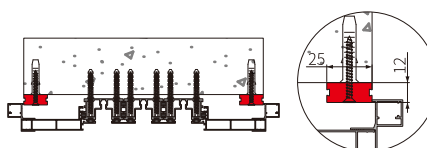


| Product name          | Model Number | order coding |
|-----------------------|--------------|--------------|
| Closing 'L' shape bar | OPK-A411     | 654175       |



**Technical overview**  
— Material: bamboo and wood fiber  
— Surface treatment: black

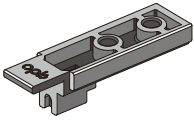
**Usage Instruction**  
— Used for concealing gap



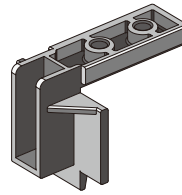
| Product name          | Model Number | order coding |
|-----------------------|--------------|--------------|
| Closing 'I' shape bar | OPK-A412     | 654176       |

# System analysis

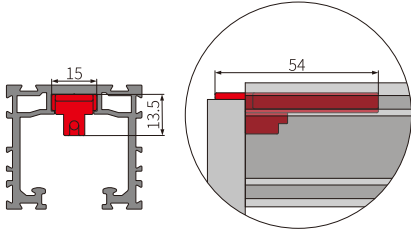
## —Track auxiliary accessories



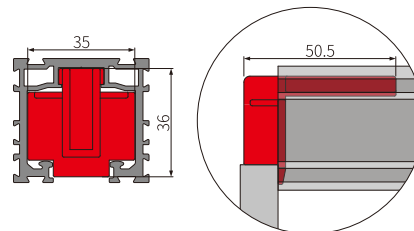
**Technical overview**  
—Material: plastic  
—Surface Treatment: Black



**Technical overview**  
—Material: plastic  
—Surface Treatment: Black



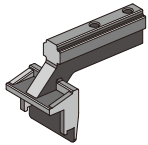
**Usage Instruction**  
— Positioning function for visible track with wall cover  
— Install two pieces per track



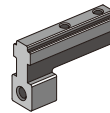
**Usage Instruction**  
— Positioning function for flat track with wall cover  
— Install two pieces per track

| Product name                       | Model Number | Order Codes  |
|------------------------------------|--------------|--------------|
| OPK visible track positioning part | OPK-A522     | CA991574-002 |

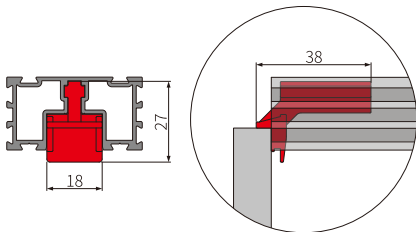
| Product name                       | Model Number | Order Codes  |
|------------------------------------|--------------|--------------|
| OPK hanging track positioning part | OPK-A523     | CA991574-003 |



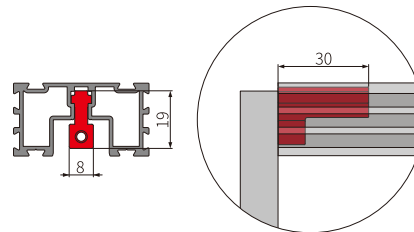
**Technical overview**  
—Material: plastic  
—Surface Treatment: Black



**Technical overview**  
—Material: plastic  
—Surface Treatment: Black



**Usage Instruction**  
— Positioning function for flat track with wall cover  
— Install two pieces per track



**Usage Instruction**  
— Positioning function for flat track with wall cover  
— Install two pieces per track

| Product name  | Model Number | Order Codes  |
|---|--------------|--------------|
| OPK flat track positioning part ( for application with bottom track ) | OPK-A525     | CA991574-005 |

| Product name   | Model Number | Order Codes  |
|--|--------------|--------------|
| OPK visible track positioning part ( for application with bottom track ) | OPK-A524     | CA991574-004 |